



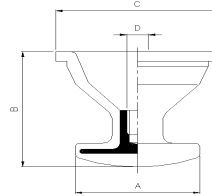
Sanitary
flow
equipment



Quality
System
Certified
ISO 9001

VFA diaphragm.doc
Rev.00 Page 1 of 1

MVA-X SILICONE LSR 2670 DIAPHRAGM



Dimensions	A	B	C	D	Valvola Manuale		Valvola Pneumatica	
Type	mm	mm	mm	Screw	Tenuta	Corsa	Tenuta	Corsa
MVA-3/4"-X	23	23,5	36	M4	8 bar	4,0 mm	8 bar	4,0 mm
MVA-1"-X	35	35	50	M6	8 bar	6,0 mm	6 bar	5,5 mm
MVA-1"1/2-X	45	53	61	M8	8 bar	6,5 mm	6,5 bar	6,5 mm
MVA-2"-X	67	68	97,5	M8	8 bar	9,0 mm	7,5 bar	10,0 mm

Build by **Silopren® LSR 2670** a silicone elastomer composed from two components, it is supplied by GE Bayer Silicones and it is obtained with a modern system of injection molding. After molding, they undergo a heat treatment (post-cured) of 4 hours at 200°C inside a furnace with forced ventilation.

During the molding phase, it is embed inside it a special AISI 316L screwed bush in order to fix it on the stem.

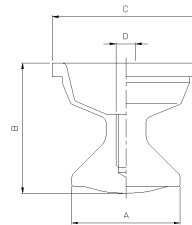
HARDNESS (DIN 53 505) 70 shore

OPERATING PRESSURE Minimum – 1 bar @ Maximum 6 bar g.

OPERATING TEMPERATURE
Continuous use : Min. – 10 °C @ Max. 150 °C
For short periods : Min. – 10 °C @ Max. 240 °C
 (For example sterilization cycles with steam)

MVA-G TFM 1600 PTFE DIAPHRAGM

TFM is a registered trademark of Dyneon



Dimensions	A	B	C	D	Manuale		Pneum. Inox		Pneum. PP	
Type	mm	mm	mm	Screw	Tenuta	Corsa	Tenuta	Corsa	Tenuta	Corsa
MVA-3/4"-G	22	26,5	36	M6	8 bar	4,0 mm	8 bar	4,0 mm	8 bar	5,0 mm
MVA-1"-G	32	39	49	M8	8 bar	6,0 mm	8 bar	5,5 mm	8 bar	6,0 mm
MVA-1"1/2-G	45	55	61	M8	8 bar	7,0 mm	8 bar	6,5 mm	8 bar	6,5 mm
MVA-2"-G	58	72,6	97,5	M10	8 bar	7,5 mm	7,5 bar	9,0 mm	8 bar	8,0 mm
MVA-3"-G	90	91,5	112	M10	4 bar	15,0 mm	3 bar	15,0 mm	3 bar	15,0 mm

They are obtained, by means of machining on CCN, from **TFM™ 1600 PTFE** round bar, Poly-Tetra-Fluor-Ethylene from Dyneon™ - 3M. They are manufactured by five different model with the followings different sizes from 3/4" @ 3", after the machining, on it is fixed a special AISI 316L screwed bush in order to fit it on the stem.

OPERATING PRESSURE Minimum – 1 bar @ Maximum 6 bar g.

OPERATING TEMPERATURE
Continuous use : Min. – 10 °C @ Max. 150 °C
For short periods : Min. – 10 °C @ Max. 240 °C
 (For example sterilization cycles with steam)

Get the information you need and more at : info@erreinox.it

In the interests of development and improvement of the product, we reserve the right to change the specifications without prior notice.