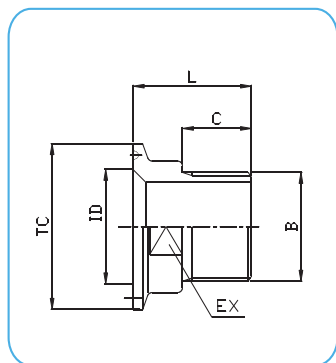
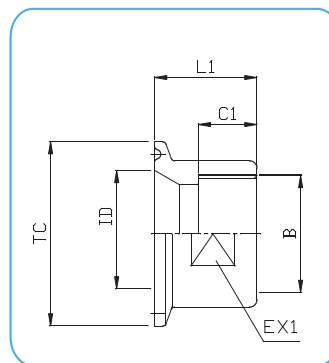


21MP -22MP Adapter Tri-Clamp to Thread



21MP MALE ADAPTER
TC ASME BPE x BSPP THREAD



22MP FEMALE ADAPTER
TC ASME BPE x BSPP THREAD

21MP MALE code	22MP FEMALE code	Clamp size	Thread B	ØTC (mm)	ID (mm)	L	C	EX	L ₁	C ₁	EX ₁
21MP-A050X012GM-11A-A	22MP..GF..	1/2"	1/8"	25	9.4	28	10	17	15	8	17
21MP-A050X025GM-11A-A	22MP..GF..	1/2"	1/4"	25	9.4	28	12	17	20	8	17
21MP-A050X037GM-11A-A	22MP..GF..	1/2"	3/8"	25	9.4	28	14	17	38	13	22
21MP-A050X050GM-11A-A	22MP..GF..	1/2"	1/2"	25	9.4	38	14	22	28	12	22
21MP-A075X012GM-11A-A	22MP..GF..	3/4"	1/8"	25	15.75	28	10	17	15	8	17
21MP-A075X025GM-11A-A	22MP..GF..	3/4"	1/4"	25	15.75	28	12	17	20	8	17
21MP-A075X037GM-11A-A	22MP..GF..	3/4"	3/8"	25	15.75	28	14	17	38	13	22
21MP-A075X050GM-11A-A	22MP..GF..	3/4"	1/2"	25	15.75	38	14	22	38	13	22
21MP-A075X075GM-11A-A	22MP..GF..	3/4"	3/4"	25	15.75	43	21	26	28	14	32
21MP-A100X012GM-11A-A	22MP..GF..	1"	1/8"	50.5	22.1	28	10	36	15	8	17
21MP-A100X025GM-11A-A	22MP..GF..	1"	1/4"	50.5	22.1	28	12	36	20	8	17
21MP-A100X037GM-11A-A	22MP..GF..	1"	3/8"	50.5	22.1	28	14	36	28	10	36
21MP-A100X050GM-11A-A	22MP..GF..	1"	1/2"	50.5	22.1	28	14	36	28	12	36
21MP-A100X075GM-11A-A	22MP..GF..	1"	3/4"	50.5	22.1	36	21	36	28	14	36
21MP-A100X100GM-11A-A	22MP..GF..	1"	1"	50.5	22.1	36	21	36	28	16	36
21MP-A100X125GM-11A-A	22MP..GF..	1"	1 1/4"	50.5	22.1	38	21	38	38	16	48
21MP-A150X025GM-11A-A	22MP..GF..	1 1/2"	1/4"	50.5	34.8	28	12	36	20	8	17
21MP-A150X037GM-11A-A	22MP..GF..	1 1/2"	3/8"	50.5	34.8	28	14	36	28	13	36
21MP-A150X050GM-11A-A	22MP..GF..	1 1/2"	1/2"	50.5	34.8	28	14	36	28	12	36
21MP-A150X075GM-11A-A	22MP..GF..	1 1/2"	3/4"	50.5	34.8	36	21	36	28	14	36
21MP-A150X100GM-11A-A	22MP..GF..	1 1/2"	1"	50.5	34.8	36	21	36	28	16	36
21MP-A150X125GM-11A-A	22MP..GF..	1 1/2"	1 1/4"	50.5	34.8	38	21	38	38	16	48
21MP-A150X150GM-11A-A	22MP..GF..	1 1/2"	1 1/2"	50.5	34.8	40	21	38	38	18	55
21MP-A200X025GM-11A-A	22MP..GF..	2"	1/4"	64	47.5	28	12	36	20	8	17
21MP-A200X037GM-11A-A	22MP..GF..	2"	3/8"	64	47.5	28	14	42	28	10	36
21MP-A200X050GM-11A-A	22MP..GF..	2"	1/2"	64	47.5	28	14	42	28	12	36
21MP-A200X075GM-11A-A	22MP..GF..	2"	3/4"	64	47.5	36	21	42	28	14	36
21MP-A200X100GM-11A-A	22MP..GF..	2"	1"	64	47.5	36	21	42	28	16	40
21MP-A200X150GM-11A-A	22MP..GF..	2"	1 1/2"	64	47.5	40	21	50	38	18	50
21MP-A200X125GM-11A-A	22MP..GF..	2"	1 1/4"	64	47.5	38	21	50	38	16	48
21MP-A200X200GM-11A-A	22MP..GF..	2"	2"	64	47.5	43	21	55	38	19	65
21MP-A200X250GM-11A-A	22MP..GF..	2"	2 1/2"	64	47.5	60	25	65	36	18	80
21MP-A250X100GM-11A-A	22MP..GF..	2 1/2"	1"	77.5	60.2	40	21	65	28	16	40
21MP-A250X150GM-11A-A	22MP..GF..	2 1/2"	1 1/2"	77.5	60.2	40	21	65	32	18	65
21MP-A250X200GM-11A-A	22MP..GF..	2 1/2"	2"	77.5	60.2	43	21	65	32	19	65
21MP-A250X250GM-11A-A	22MP..GF..	2 1/2"	2 1/2"	77.5	60.2	60	25	70	36	18	80
21MP-A300X300GM-11A-A	22MP..GF..	3"	3"	91	72.9	50	20	82	50	24	95

Technical Information:

Tri-Clamp Connection: according to ASME BPE

Thread Connection: according to BSPP cylindrical gas

Material: AISI 316L – 1.4404

Internal Surface Finish: Ra <= 0.5µm → code **11** e.g.: 21MP-...-**11**A-A

Optional: Thread Connection according to BSPT conical gas or NPT

DATASHEETS



Last updates can be found on our website - www.aerreinox.it

In the interests of development of the product, we reserve the right to change the specifications without prior notice