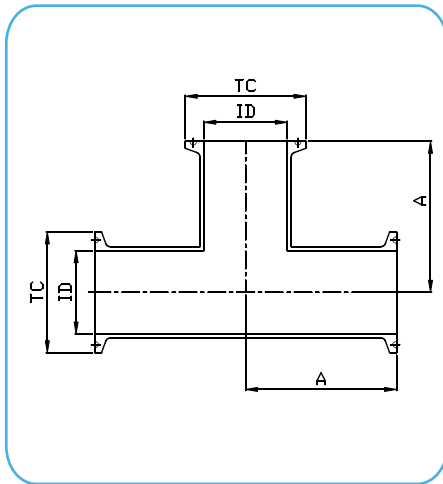


7MP - 9MP Tri-Clamp Tee-Cross ASME BPE



7MP-TEE
TC x TC ASME BPE
DT-4.1.2-4

CODE	Size inch	ØTC (mm)	ØID (mm)	A (mm)
7MP-A050-13A	1/2"	25	9.4	60.3
7MP-A075-13A	3/4"	25	15.75	63.5
7MP-A100-13A	1"	50.5	22.1	66.7
7MP-A150-13A	1" 1/2	50.5	34.8	73.0
7MP-A200-13A	2"	64	47.5	85.7
7MP-A250-13A	2" 1/2	77.5	60.2	92.1
7MP-A300-13A	3"	91	72.9	98.4
7MP-A400-13A	4"	119	97.4	120.7
7MP-A600-13A	6"	167	146.8	181.0

Technical Information:

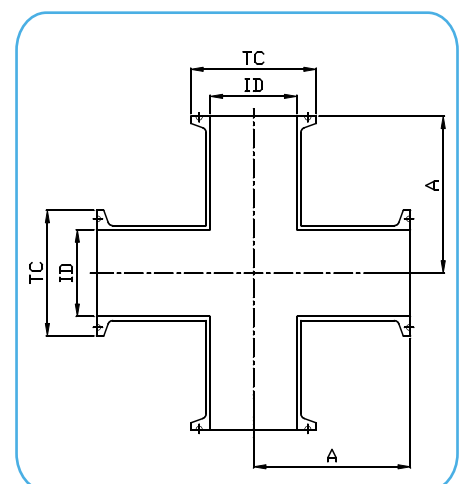
Connections: Tri-Clamp according to ASME BPE [latest ed.]

Material: AISI 316L – 1.4404

Internal Surface Finish: SF1 Ra ≤ 0.5µm → code **13** e.g.: 7MP-A050-**13A**

Optional: SF4 Ra ≤ 0.38µm Electropolish → code **43** e.g.: 7MP-A050-**43A**

CODE	Size inch	ØTC (mm)	ØID (mm)	A (mm)
9MP-A050-13A	1/2"	25	9.4	60.3
9MP-A075-13A	3/4"	25	15.75	63.5
9MP-A100-13A	1"	50.5	22.1	66.7
9MP-A150-13A	1" 1/2	50.5	34.8	73.0
9MP-A200-13A	2"	64	47.5	85.7
9MP-A250-13A	2" 1/2	77.5	60.2	92.1
9MP-A300-13A	3"	91	72.9	98.4
9MP-A400-13A	4"	119	97.4	120.7
9MP-A600-13A	6"	167	146.8	181.0



9MP-CROSS
TC x TC ASME BPE
DT-4.1.2-4

DATASHEETS



Last updates can be found on our website - www.aerreinox.it
In the interests of development of the product, we reserve the right to change the specifications without prior notice