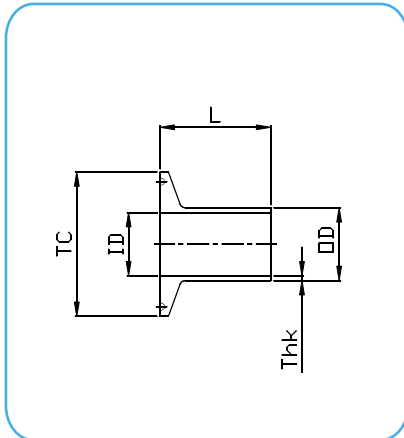


FERRULE CLAMP DIN 32676 - ISO 2852



**FERRULE CLAMP
DIN 32676 - A**

CODE	Size DN	ØTC (mm)	OD X Thk (mm)	ID (mm)	L (mm)
L14AM7-C025-34A-Q	8	25	10 x 1.0	8	12.7
L14AM7-C037-34A-Q	10	34	13 x 1.5	10	18
L14AM7-C050-34A-Q	15	34	19 x 1.5	16	18
L14AM7-C075-34A-Q	20	34	23 x 1.5	20	18
L14AM7-C100-34A-Q	25	50.5	29 x 1.5	26	21.5
L14AM7-C125-34A-Q	32	50.5	35 x 1.5	32	21.5
L14AM7-C150-34A-Q	40	50.5	41 x 1.5	38	21.5
L14AM7-C200-34A-Q	50	64	53 x 1.5	50	21.5
L14AM7-C250-34A-Q	65	91	70 x 2.0	66	28
L14AM7-C300-34A-Q	80	106	85 x 2.0	81	28
L14AM7-C400-34A-Q	100	119	104 x 2.0	100	28
L14AM7-C500-34A-Q	125	155	129 x 2.0	125	28
L14AM7-C600-34A-Q	150	183	154 x 2.0	150	28
L14AM7-C800-34A-Q	200	233.5	204 x 2.0	200	28

Technical Information:

Tri-Clamp Connection: according to DIN 32676 - REIHE A

Material: AISI 316L – 1.4404

Internal Surface Finish: Ra<=0.8µm → code **34** e.g.: L14AM7-C050-**34**A

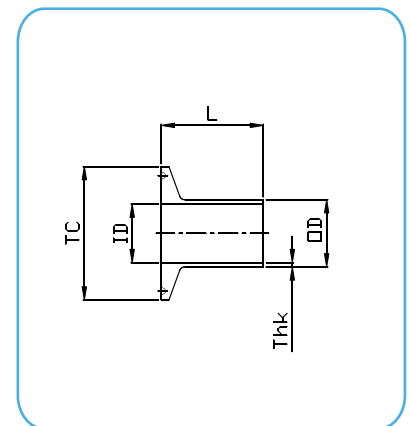
Technical Information:

Tri-Clamp Connection: according to ISO 2852 / DIN 32676 - REIHE B

Material: AISI 316L – 1.4404

Internal Surface Finish: Ra<=0.8µm → code **34** e.g.: L14AM7-H050-**34**A

CODE	Size DN	ØTC (mm)	OD X Thk (mm)	ID (mm)	L (mm)
L14AM7-H025-34A-Q	8	25	13.5 x 1.6	10.3	12.7
L14AM7-H037-34A-Q	10	25	17.2 x 1.6	14	12.7
L14AM7-H050-34A-Q	15	50.5	21.3 x 1.6	18.1	21.5
L14AM7-H075-34A-Q	20	50.5	26.9 x 1.6	23.7	21.5
L14AM7-H100-34A-Q	25	50.5	33.7 x 2.0	29.7	21.5
L14AM7-H125-34A-Q	32	64	42.4 x 2.0	38.4	21.5
L14AM7-H150-34A-Q	40	64	48.3 x 2.0	44.3	21.5
L14AM7-H200-34A-Q	50	77.5	60.3 x 2.0	56.3	28
L14AM7-H250-34A-Q	65	91	76.1 x 2.0	72.1	28
L14AM7-H300-34A-Q	80	106	88.9 x 2.3	84.3	28
L14AM7-H400-34A-Q	100	130	114.3 x 2.3	109.7	28
L14AM7-H500-34A-Q	125	155	139.7 x 2.6	134.5	28
L14AM7-H600-34A-Q	150	183	168.3 x 2.6	163.1	28
L14AM7-H800-34A-Q	200	233.5	219.1 x 2.6	213.9	28



**FERRULE CLAMP
ISO 2852
DIN 32676 - B**

DATASHEETS



Last updates can be found on our website - www.aerreinox.it
In the interests of development of the product, we reserve the right to change the specifications without prior notice