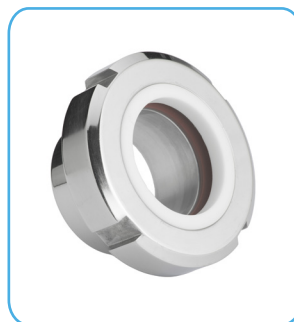
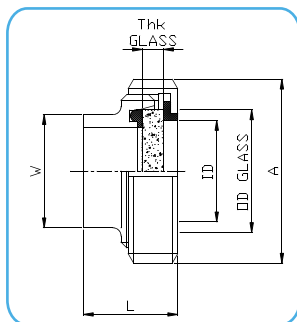


# SPD

## Flat sight glass

### with DIN 11851 Connection



CODE	W mm	ID mm	A mm	L mm	Borosilicate glass		P max
					OD	Thk	
SPD-100-X-31A	35	30	63	39	40	10	atmospheric
SPD-125-X-31A	41	35	70	42	45	10	atmospheric
SPD-150-X-31A	48	43	78	43	50	9	atmospheric
SPD-200-X-31A	61	50	92	45	60	9	atmospheric
SPD-250-X-31A	79	66	112	50	80	9	atmospheric
SPD-300-X-31A	93	80	127	56	95	9	atmospheric
SPD-400-X-31A	114	100	148	65	112	9	atmospheric
SPD-500-X-34A-T*	137	125	178	57.5	140	12	atmospheric
SPD-600-X-34A-T*	163	150	210	65	165	15	atmospheric

\* only on request → sodium silicate glass / only silicone seal

## Technical Information:

**DIN 11851 male fitting:** AISI 316L - 1.4404

**DIN 11851 nut:** AISI 304

**Glass Material:** Borosilicate

**Gaskets:**

**Seals 100°C:** Silicone + Delrin Lens cushion gasket (X) - (standard)

**Seals 150°C:** PTFE + PTFE Lens cushion gasket (G) - (optional)

**Internal Surface Finish:**  $R_a \leq 0.76 \mu m$  → code 31 e.g.: SPD-100-X-31A

## Specifications:

**Max Working Pressure:** only for atmospheric process

**Marking:** Each SPD Flat sight glass is marked with serial number for full lot traceability

### Advantages :

- Clear process visibility
- Fast and simple installation and maintenance
- Extremely compact design with large viewing area

DATASHEETS



Last updates can be found on our website - [www.aerreinox.it](http://www.aerreinox.it)  
 In the interests of development of the product, we reserve the right to change the specifications without prior notice